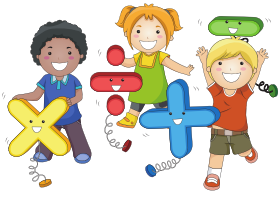


name

date

class

score



Simple Addition Word Problems Worksheet

Use addition to solve the problems below. Show your work.

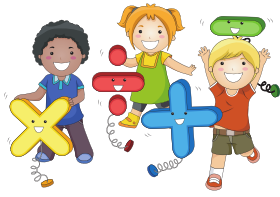
1. It is a 5-minute walk from home to the bus station. The bus ride to school is 20 minutes. How long does it take to go to school from home?
2. Denny has \$7.5 in his pocket; Sally has \$5 dollars in her purse. How much money do they both have?
3. Vanessa has 13 pairs of shoes. Her mom has 10 pairs of shoes. How many pairs of shoes do they have in total?
4. Ronald worked 8 hours yesterday, and 11 hours today. How many hours did he work yesterday and today?
5. Linda is working at a cafe today. In the morning, 23 people came in and ordered coffee. In the afternoon, only 7 people ordered coffee. How many people ordered coffee at the cafe today?

name

date

class

score



Simple Addition Word Problems Worksheet

Answer Key

Use addition to solve the problems below. Show your work.

1. It is a 5-minute walk from home to the bus station. The bus ride to school is 20 minutes. How long does it take to go to school from home?

$$5+20 = 25 \text{ minutes}$$

2. Denny has \$7.5 in his pocket; Sally has \$5 dollars in her purse. How much money do they both have?

$$7.5+5 = \$12.5$$

3. Vanessa has 13 pairs of shoes. Her mom has 10 pairs of shoes. How many pairs of shoes do they have in total?

$$13+10 = 23 \text{ pairs of shoes}$$

4. Ronald worked 8 hours yesterday, and 11 hours today. How many hours did he work yesterday and today?

$$8+11 = 19 \text{ hours}$$

5. Linda is working at a cafe today. In the morning, 23 people came in and ordered coffee. In the afternoon, only 7 people ordered coffee. How many people ordered coffee at the cafe today?

$$23+7 = 30 \text{ people}$$